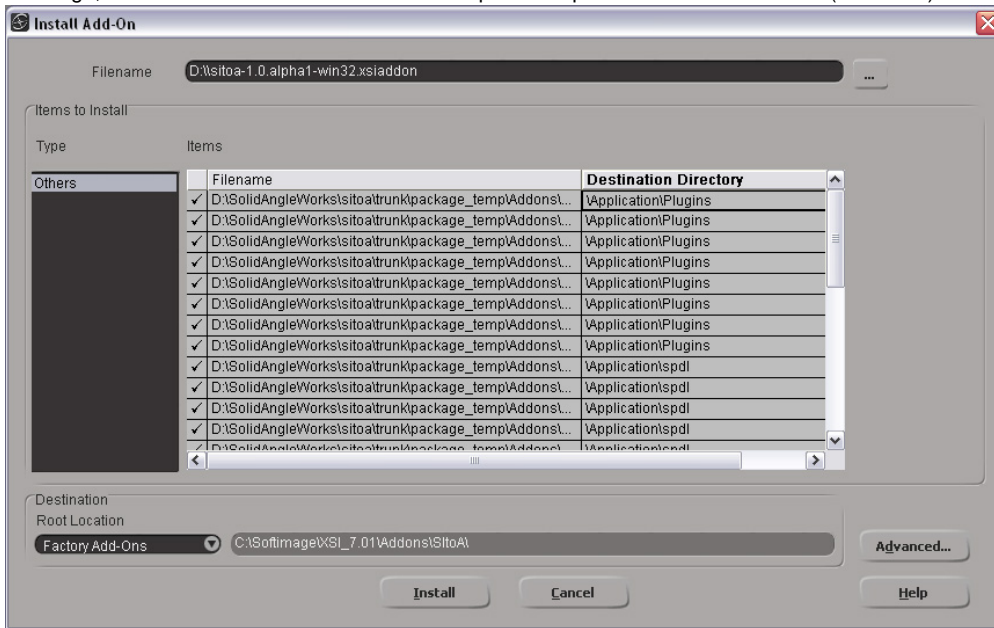


# Installation

The SItOA plug-in is distributed as a Softimage add-on. To install it, simply download the correct SItOA pack and unzip the file. Then in Softimage, select the File->Add-on->Install menu option and point it at the SItOA add-on (.xsiaddon) file. Then follow the steps in the wizard:



So here you install all of the data (Factory, User, Workgroup). It will then install all of the files that are required to execute the Arnold Renderer.

Please refer to the Softimage documentation for other ways to install Softimage add-ons.

## RUNNING SITO A on LINUX

Starting from SItOA 3.6.0 (which uses Arnold 4.2.6.0), the minimum requirements have been raised to the equivalent of RHEL/CentOS 6 for glibc and libstdc++.

However, Softimage ships with a legacy libstdc++ that is put in the LD\_LIBRARY\_PATH and that hijacks the system one, making it impossible to load the Arnold DSO.

To fix this, one solution is to preload the system libstdc++ before launching Softimage:

```
export LD_PRELOAD=/usr/lib64/libstdc++.so.6
```

Another solution is to stow away the libstdc++ from the Softimage install and let the system one take over, for example:

```
cd my_softimage_install/Application/bin
mv libstdc++.so.6 libstdc++.so.6.bak
mv libstdc++.so.6.0.10 libstdc++.so.6.0.10.bak
```