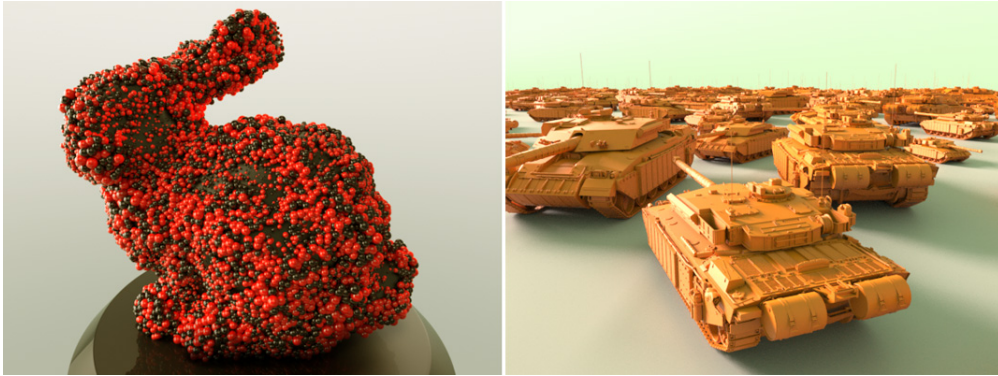


# ICE



ICE examples: a bunny model covered with particles using the sphere primitive (left) and instanced tanks (right)

SltoA provides support for ICE point clouds and strands. Attributes passing, motion blur and shape instancing on both points and strands are also supported.

- [Points](#)
- [Strands](#)
- [Instance Shapes](#)
- [Instancing Lights](#)
- [Instancing Stand-ins](#)
- [ICE Motion Blur](#)